

THREADLEGS™

DESIGN & INSTALLATION GUIDE



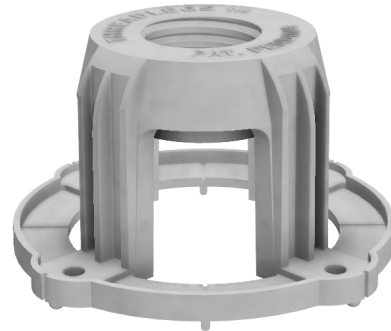
JANUARY 2023

www.threadlegs.com

THREADLEGS™ 

THREADLEGS™

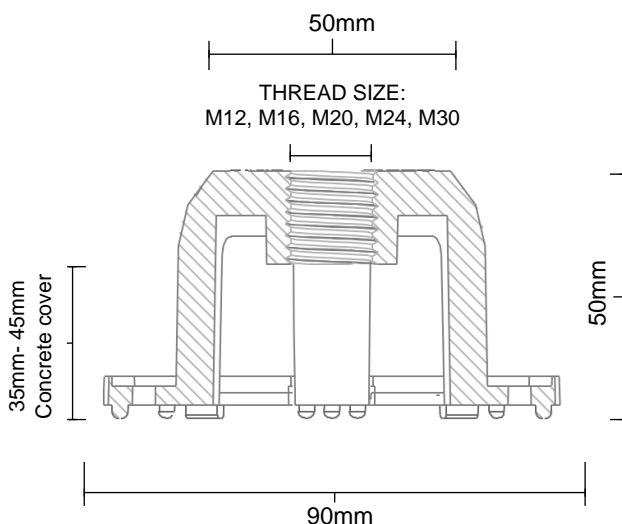
Threadlegs™ have been designed to ensure hold down bolts are installed to their exact design location and remain in place until concrete is poured. The patented design allows hold down bolts to be suspended above the formwork deck to ensure concrete cover is maintained beneath the hold down bolts to satisfy structural engineers requirements. The structurally engineered design prevents hold down bolt arrangements shifting during reinforcement installation and during concrete pours.



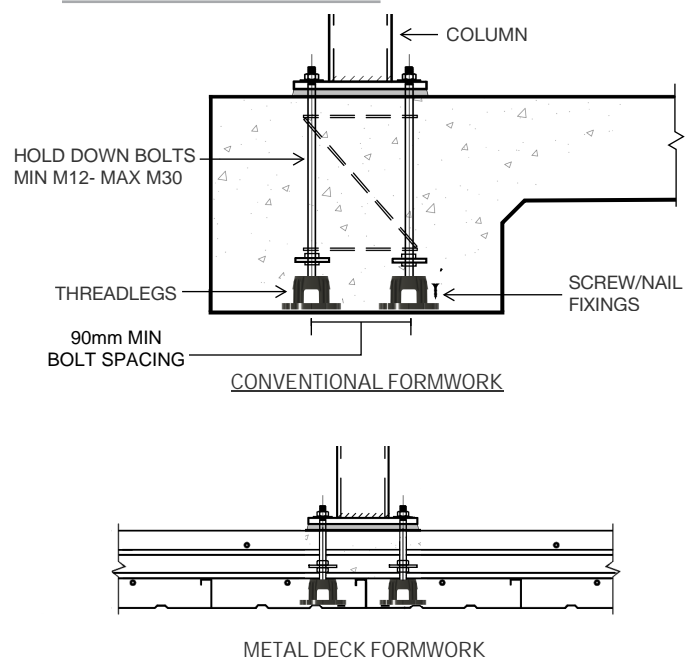
A structurally engineered design ensures the precise installation of hold down anchor bolts is maintained before and during concrete pours with the following features:

- Locating indicators ensure hold down bolts are installed in the exact locations marked on the formwork
- Available in thread size M12, M16, M20, M24 & M30 (Imperial threads available as special order)
- Multiple fixing points into timber or metal formwork via screw or nail fixing prevent hold down bolt movement when trafficked.
- Complies with AS3600-2009 for concrete cover.
- Full plastic protection to maximise concrete cover and withstand multiple exposure classifications.
- Easy and fast installation significantly reduces labour time and costs on-site.
- Cavity body design allows 20mm aggregate and concrete to flow underneath threaded hold down bolts.
- Threaded core allows for vertical levelling of hold down bolts by twist adjustment of the legs.
- Reveals excellent exposed concrete soffit surface when stripped without the need for patching

DIMENSIONS

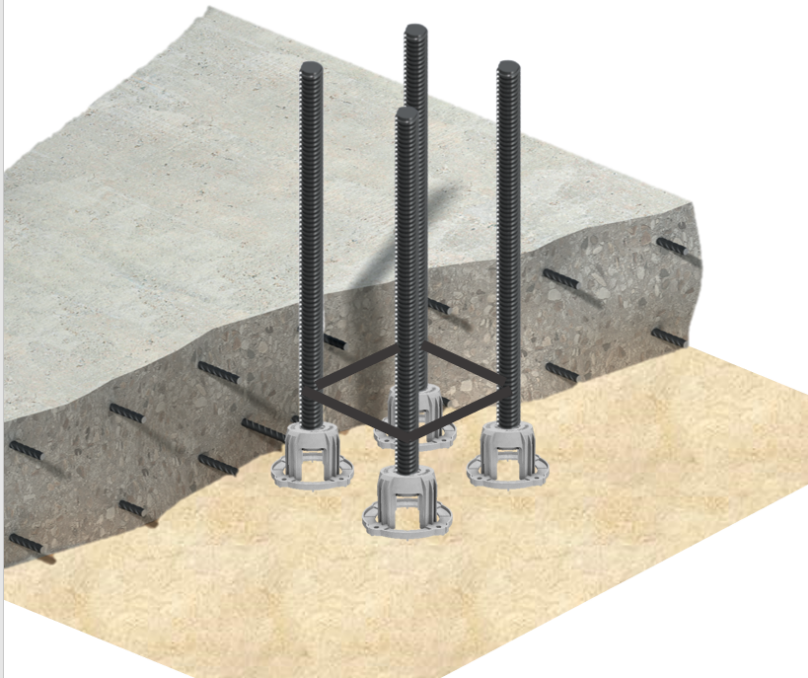


APPLICATIONS

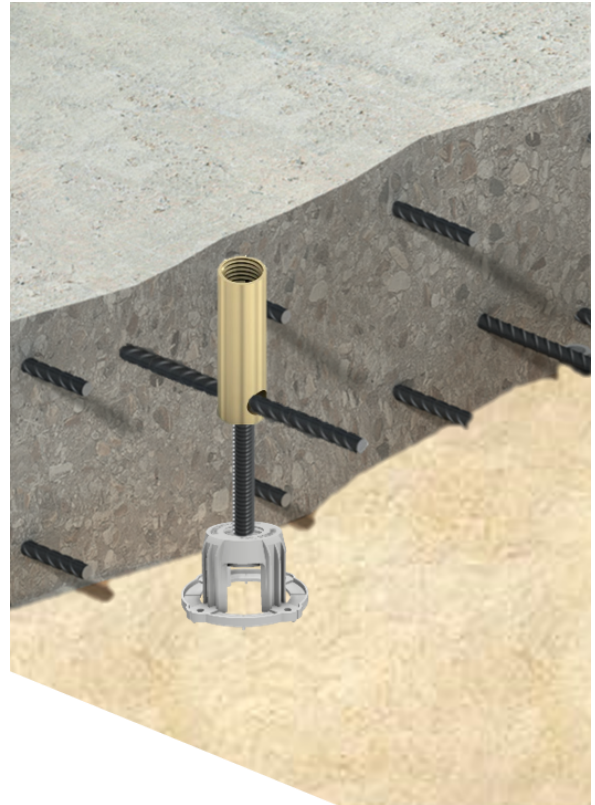


THREADLEG USES

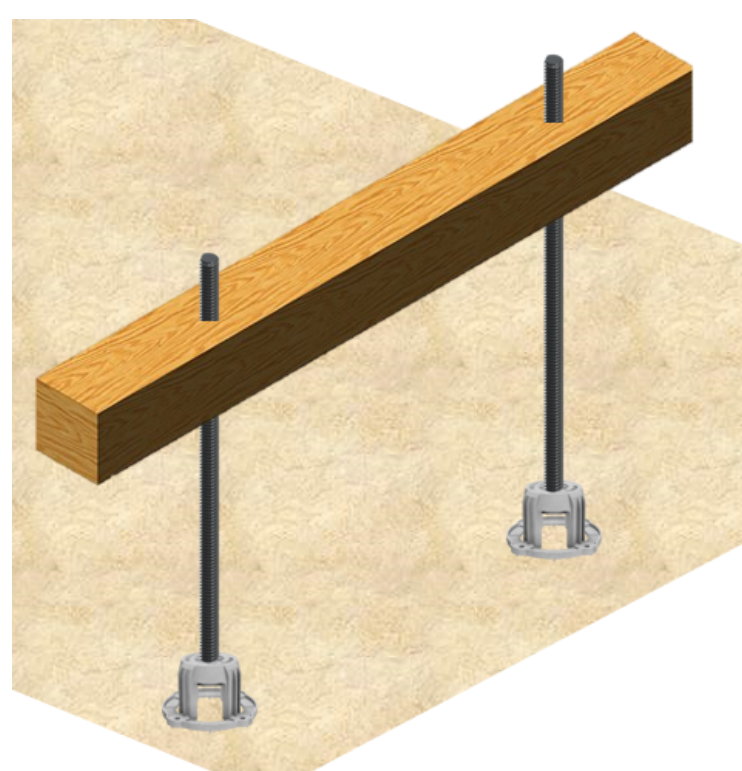
HOLD DOWN ANCHOR BOLT SUPPORT



CONCRETE PROPPING FERRULE SUPPORT



FLOATING FORMWORK SUPPORT



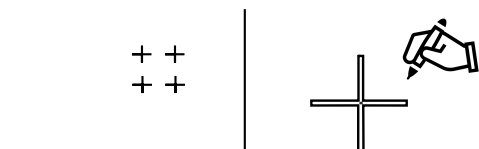
CAST-IN PLUMBING & ELECTRICAL SUPPORTS



INSTALLATION INSTRUCTIONS

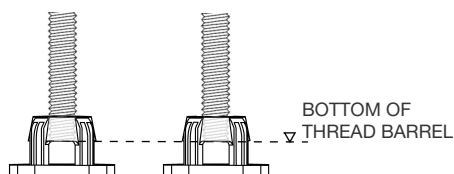
STEP 1

Mark a cross on the formwork where the hold down bolt is required to sit



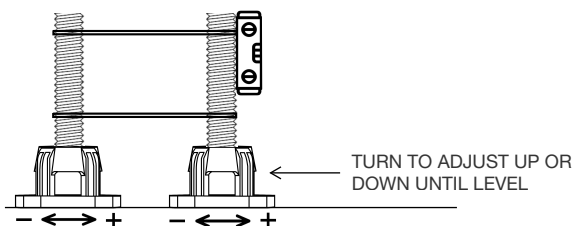
STEP 2

Screw Threadlegs onto hold down bolts until threaded rods sit flush with the bottom of the plastic thread barrel



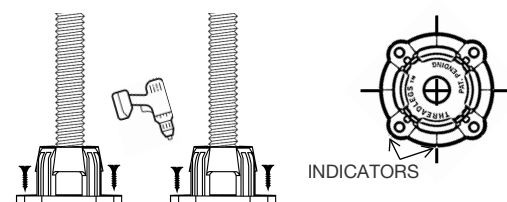
STEP 3

Place onto formwork and wind Threadlegs up or down so that all hold down bolts are level



STEP 4

Place Threadlegs onto formwork and line up the nearest indicators with marks on formwork before fixing Threadlegs with screws or nails



PROJECTS COMPLETED WITH THREADLEGS

NEW FOOTSCRAY HOSPITAL - AUSTRALIA



555 COLLINS STREET - AUSTRALIA

NORTHERN HOSPITAL EXPANSION- AUSTRALIA



For more information on Threadlegs™ and to order;

Visit: www.threadlegs.com

Email: info@threadlegs.com.au